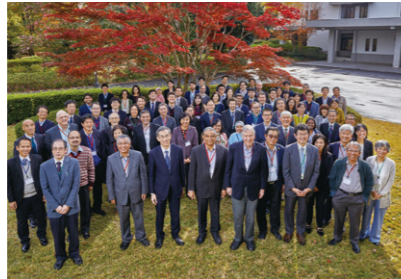


Partnering with society

The Social Systems Division aims to conduct research that will change society for the better while engaging in various activities to promote the application of its research findings in society.

International collaboration

We have been developing an international research network through sharing our AIM integrated assessment model for climate policy assessments. In addition to holding annual international workshops, we are contributing to sustainable development in Asia through capacity building of young Asian researchers.



Dialogue with local communities

We go into local communities to exchange ideas and work with them on community development. We also conduct research on topics pertinent to everyday life such as nursery school drop-off/pick up and food loss.



Outreach

We actively hold events and lectures for the general public to nurture awareness of environmental issues, including NIES Open House which kindles interest in our research among children. We also give lectures and seminars at graduate schools and other educational facilities.



Publication of research results

We provide databases and tools to be used for policymaking and research.

Asia-Pacific Integrated Model (AIM)

Some programs, input data and simulation results of the AIM developed for assessing reductions in GHG emissions in Japan and the world

Greenhouse gas emissions scenarios

A database that organizes greenhouse gas emission scenarios for more than hundreds of types around the world

Household CO₂ emissions (in Japanese only)

Map of per-household CO₂ emissions by municipality using a model for estimating household sector CO₂ emissions

SSP population projections by municipality for Japan (in Japanese only)

Shared socioeconomic pathway (SSP) population projection data by municipality and manual for use in climate change research

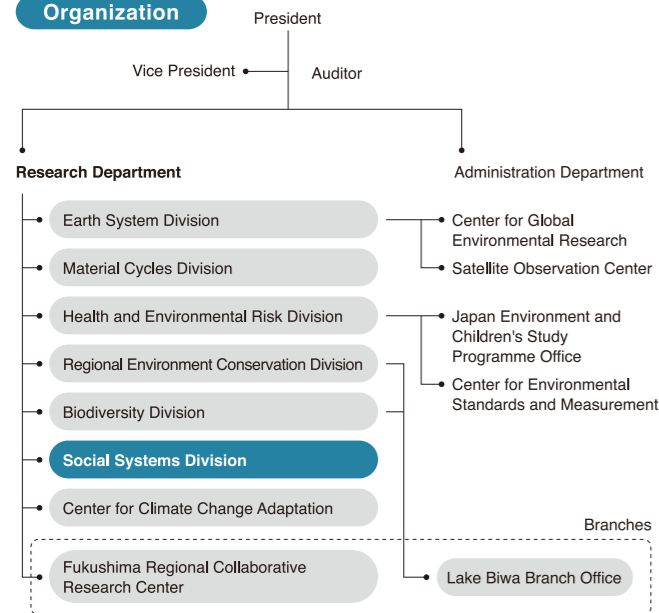
Sustainability in Japan (in Japanese only)

Monitoring Japan's progress toward a sustainable society using multiple indicators

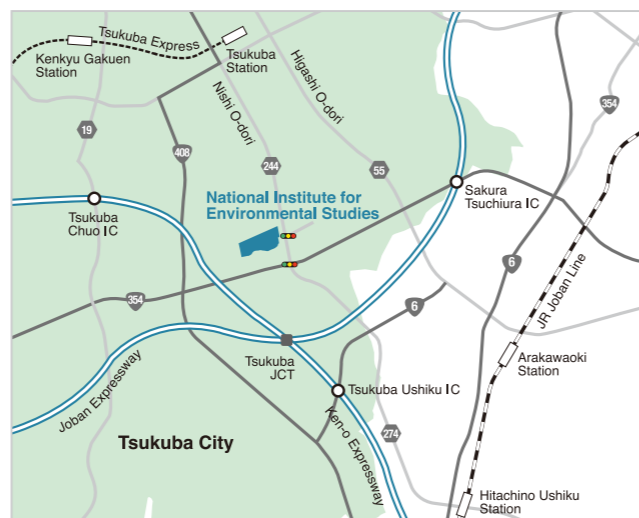
Change of the landscapes in Tsukuba Science City (in Japanese only)

Landscape change over 41 years (1980, 1991, 2006, 2021) at 70 sites in Tsukuba City

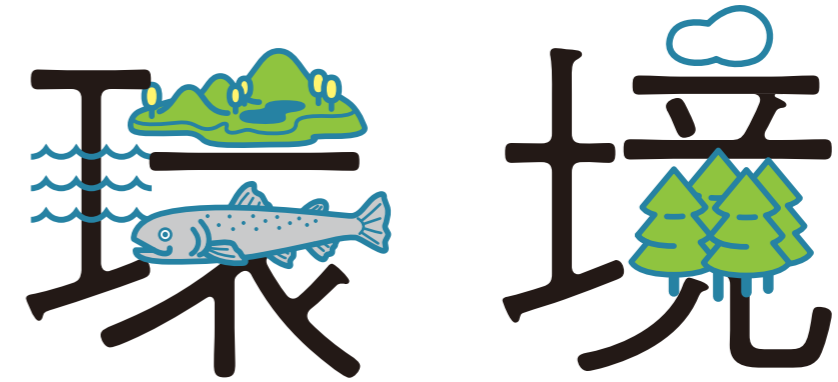
Organization



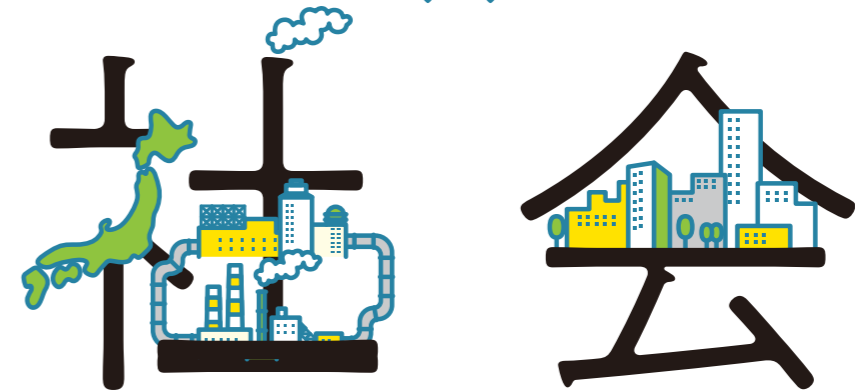
Access



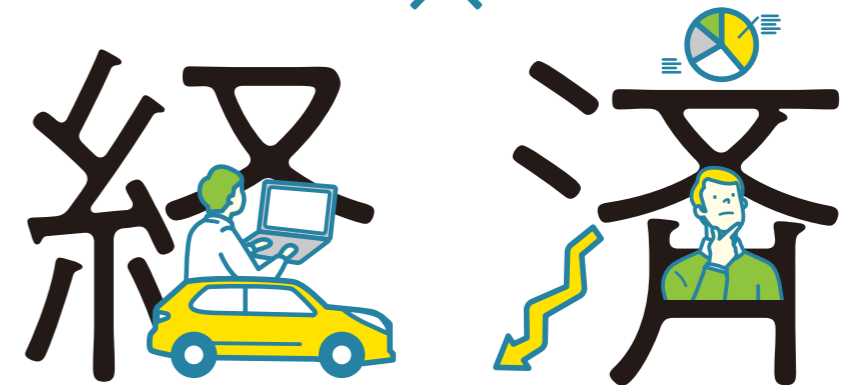
Take the Tsukuba Express to Tsukuba Station, then the Kantetsu or JR Kanto bus for Hitachino Ushiku Station, getting off at Kankyo-kenkyusyo (approx. 15 min.)



[Environment]



[Society]



[Economy]

The Social Systems Division conducts research on the relationship between human behavior/society and the environment.



<https://www.nies.go.jp/social/en/>
16-2 Onogawa, Tsukuba, Ibaraki 305-8506, Japan
EMAIL social-info@nies.go.jp



ver. Oct. 2021



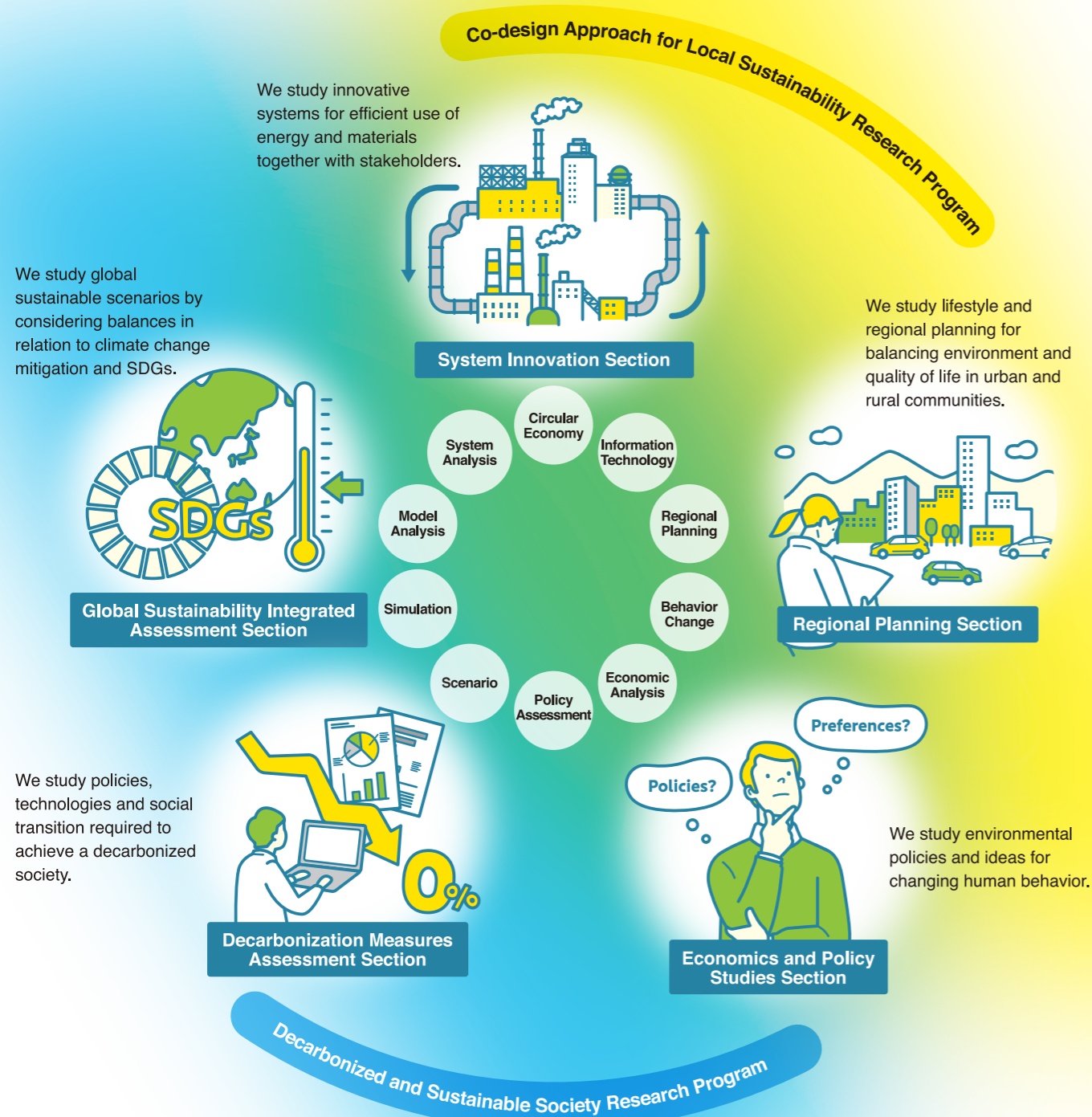
Social Systems Division
National Institute for Environmental Studies, Japan

ABOUT US

Environment × Society × Economy — Exploring Sustainable Pathways for Future Generations

The Social Systems Division conducts research on the relationship between human behavior/society and the environment.

We conduct research with the aim of building a sustainable society and environment that enables people to live in good health over the long term.



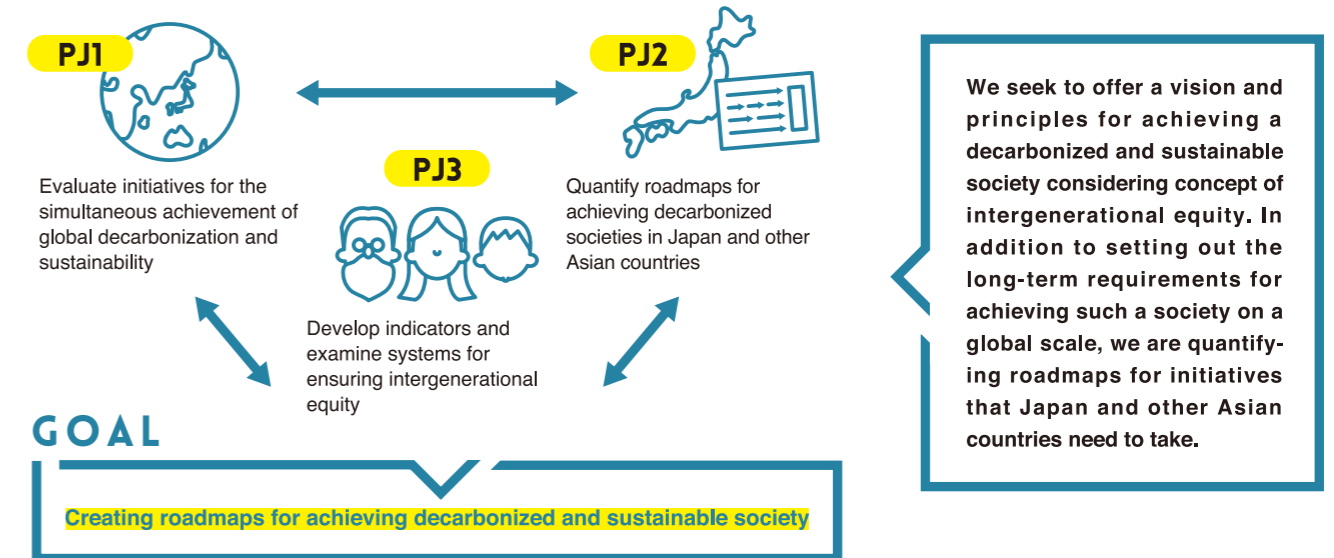
Interdisciplinary research

Strategic Research Programs

NIES operates eight Strategic Research Programs aimed at envisaging the environment or society as they should be in the near future, and addressing issues impeding the achievement of such goals through focused, integrated, interdisciplinary research. The Social Systems Division is chiefly involved in the following two programs.

Envisaging a sustainable future from the perspective of decarbonization

Decarbonized and Sustainable Society Research Program



Working together to explore the creation of sustainable local communities

Co-design Approach for Local Sustainability Research Program

